

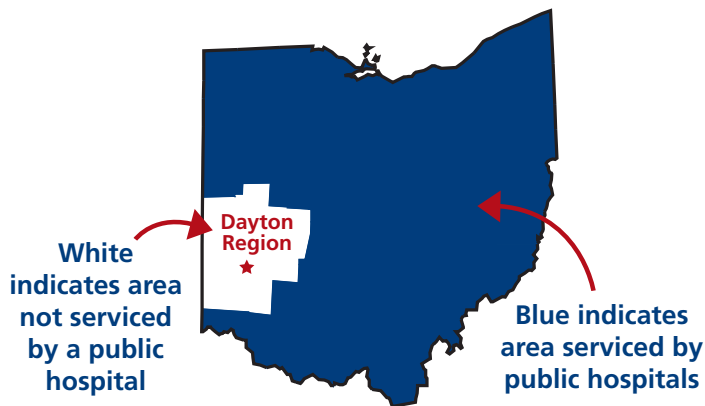
CALL TO ACTION

A PLEA FOR PATIENTS, FAMILIES AND THE ENTIRE DAYTON REGION

We are asking the State of Ohio to put the closure on immediate hold and initiate a comprehensive review of the adverse impacts

PLEA TO STATE LEGISLATORS: ADVOCATE TO RESCIND TWIN VALLEY CLOSURE

- Without proper review of patient and community ramifications, Governor Strickland's Board of Mental Health announced plans that negatively impacts healthcare for thousands of patients each year in our community.
- This document serves to clarify the ramifications that result from a short-term decision with significant long-term consequences.
- The people of our community, the families of the patients and our community leaders implore the State of Ohio to put the closure on immediate hold and initiate a comprehensive review of the adverse impacts.



DAYTON REGION LACKS A PUBLIC HOSPITAL

Twin Valley Behavioral Healthcare (TVBH), has proven to be the crucial cornerstone in a plan to help treat the growing needs of our population. Unfortunately, the State's recent decision to close TVBH stands to put considerable strain on this region's fragile safety net and put the health of its people under considerable risk.

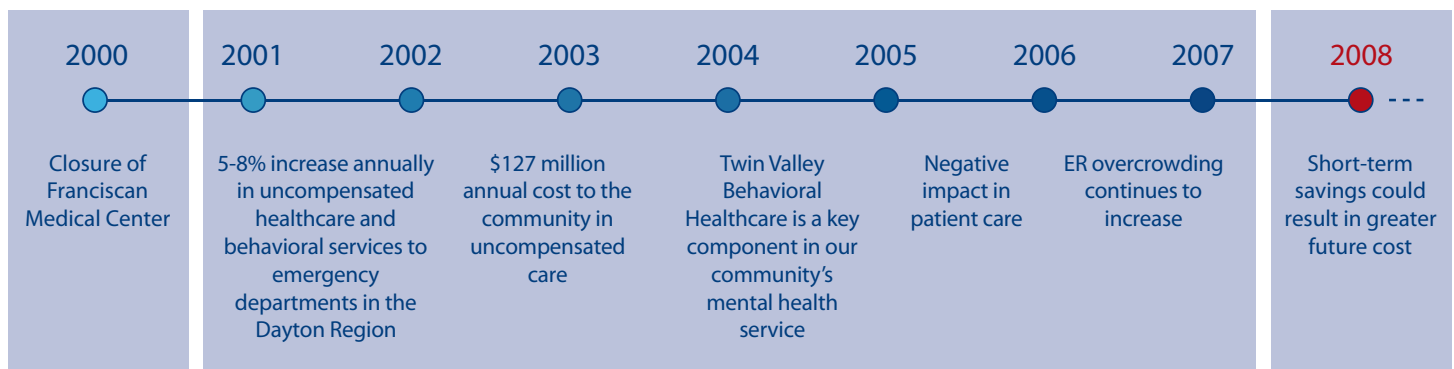
QUESTIONS THAT DESERVE ANSWERS

- What were the deciding factors utilized by the Ohio Department of Mental Health to recommend closing TVBH?
- Was the fact that the Wright State University Boonshoft School of Medicine's residency program could be adversely impacted by this closure factored into the decision-making process?
- Was the fact that the Dayton region has no public general hospital taken into consideration when this decision was made?
- How does TVBH compare to other state facilities in:
 - Operating costs?
 - Capital costs?
 - Staffing?
 - Patient length of stay?
- Did the Ohio Department of Mental Health take into consideration the vast amount of overcrowding prevalent in the Dayton Region's emergency departments?
- If TVBH is closed, what resources will the State of Ohio provide to the Dayton Region to assist with this transition – physical improvements to hospitals, transportation costs, increased security costs, etc.?

MAKE THE RIGHT DECISION

On behalf of our region's most vulnerable citizens, our diverse collection of community stakeholders, the community-at-large, and families of our mental health patients strongly urge Governor Strickland to put the closure on hold and to complete a comprehensive review of TVBH.

COMMUNITY NEED FOR TWIN VALLEY BEHAVIORAL HEALTHCARE CONTINUES



INCREASED COSTS WILL AFFECT OTHER HUMAN SERVICES

In order for the transfer of patients to be conducted, transportation costs will be incurred by all counties in the GDAHA region. For example, the Montgomery County Sheriff's office transferred over 250 individuals to TVBH on the order of the Probate and Common Pleas Court in 2007. With patient health and safety in mind, each patient transport required a minimum of two Sheriff deputies.

If the closest state mental health facilities are in Cincinnati and Columbus, the additional transportation time will result in the lost resource of two deputies and a vehicle annually. ***This nearly \$200,000 loss will translate into less community presence and decreased response times for crimes and emergencies.***

The burden of these costs will likely slice into other human services budgets. Crisis intervention, women's services, social services and even school programs will all likely suffer from these cuts.

WRIGHT STATE UNIVERSITY MAY WITNESS DIMINISHED FELLOWS AND RESIDENTS

The opportunity for many of Wright State University Boonshoft School of Medicine's medical students to rotate through TVBH has been one of the strongest recruiting tools in the school's curriculum. The closing could dilute the program's training components since this experience cannot be duplicated anywhere else in the region.

With the opportunity to be trained in a working behavioral health center gone, Wright State University may lose a significant recruiting tool.

AN OBLIGATION TO SERVE THOSE WHO SACRIFICED FOR US

Unfortunately, some of the most forgotten members of our society, are those who risked their lives while in the service of our nation. Many have returned from fields of battle only to face a greater war from within. The TVBH has been a trusted resource for administering care and comfort to former U.S. military personnel who have relied on its staff for support. At this crucial time in our nation's history, there is no greater segment of the population who deserves our honor, respect and support.

FRAGILE SAFETY NET SYSTEM AT RISK

Data indicates the Dayton Region's Emergency Departments are already more crowded than Columbus, Cincinnati and Toledo. The decision to close TVBH will exacerbate our already fragile safety net system and would not only kill the system's significant potential, but also place at risk, the health and mental well-being of the people it is intended to help the most.

CONTACT

For additional information, contact Bryan Bucklew, President of GDAHA, at: (937) 424-2373.

OUR COMMUNITY WEIGHS-IN

"The closure of Twin Valley Behavioral Healthcare will have a devastating impact on the Wright State University Department of Psychiatry's ability to train and care for the severely and chronically mentally ill."

– Dr. Jerald Kay
Wright State University
Boonshoft School of Medicine

"The proposed closing of Twin Valley will have considerable impact that will destabilize our already fragile and unique safety net healthcare services."

– Roy Chew, PhD
President & CEO
Grandview Medical Center

"Our community has come together for over a year to find innovative and better ways to provide and finance healthcare services for our most vulnerable populations. This potential closure will add considerable pressure to our stressed regional healthcare system and potentially hurt the most vulnerable of our community."

– Mary Boosalis
President & CEO
Miami Valley Hospital

"The plan appears to be ill-conceived, poorly planned, and a potential disaster for the Dayton region."

– Dayton Daily News Editorial
February 19, 2008

